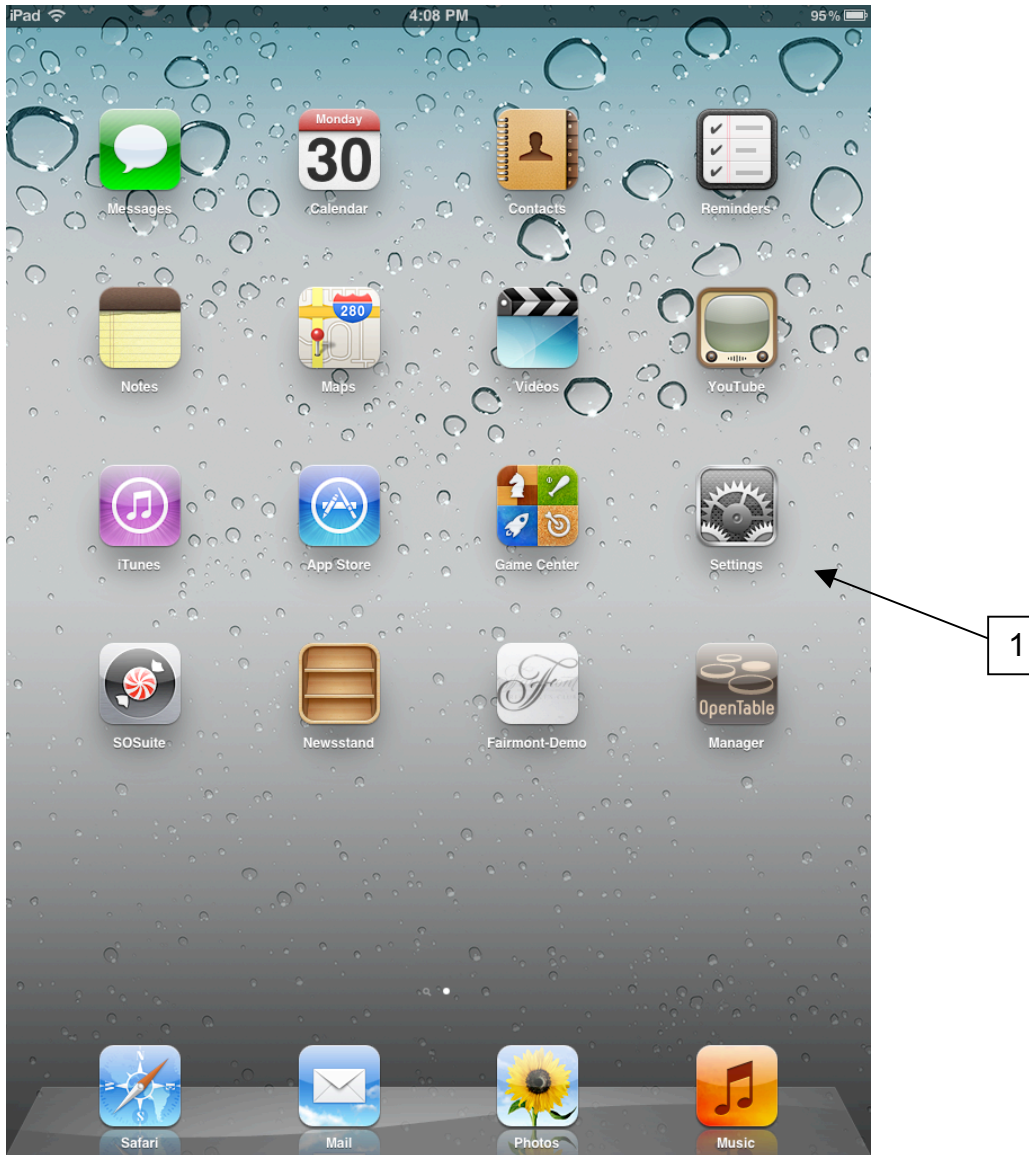
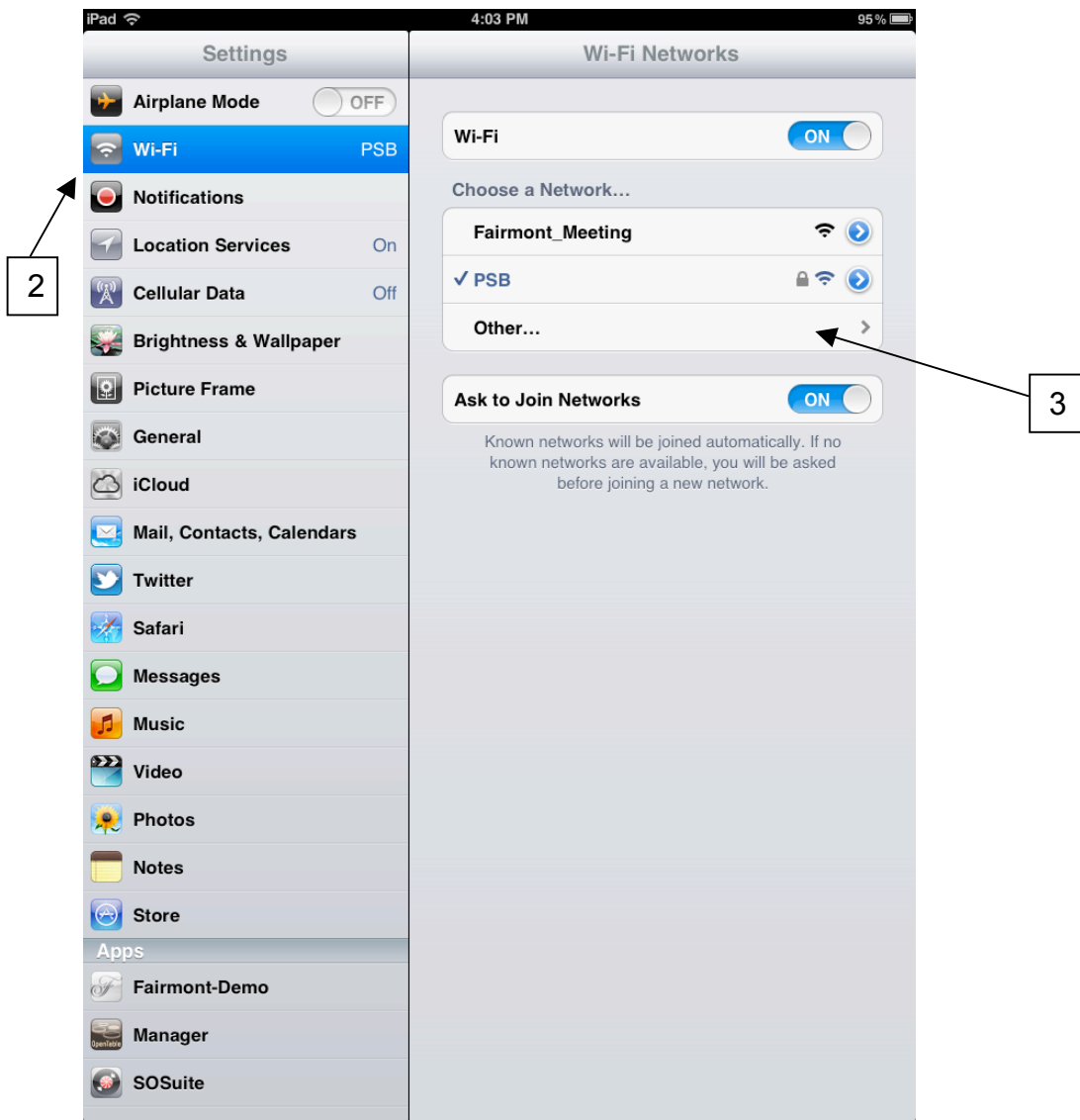




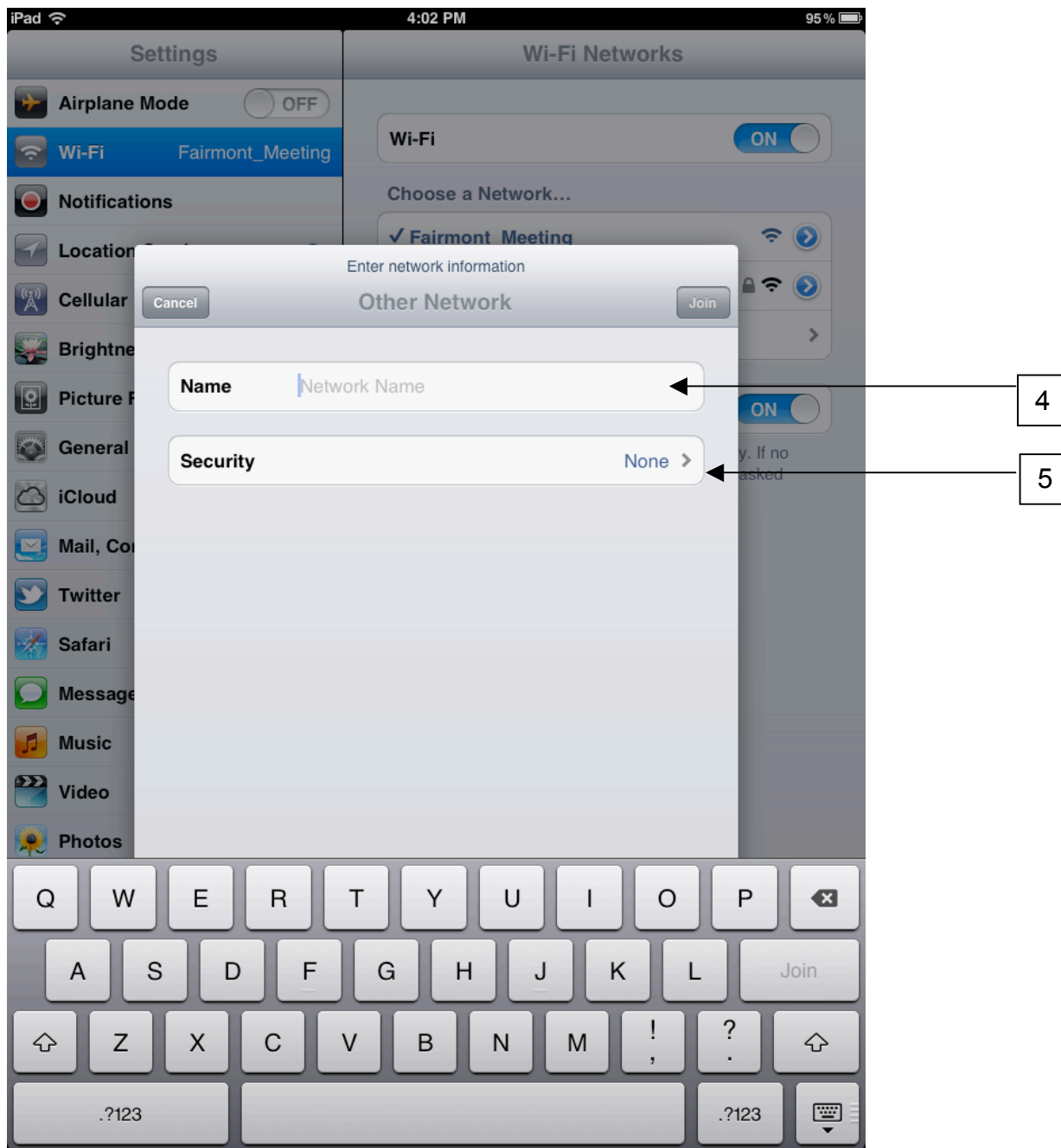
iPad/iPhone PSB 2014 Wireless Guide



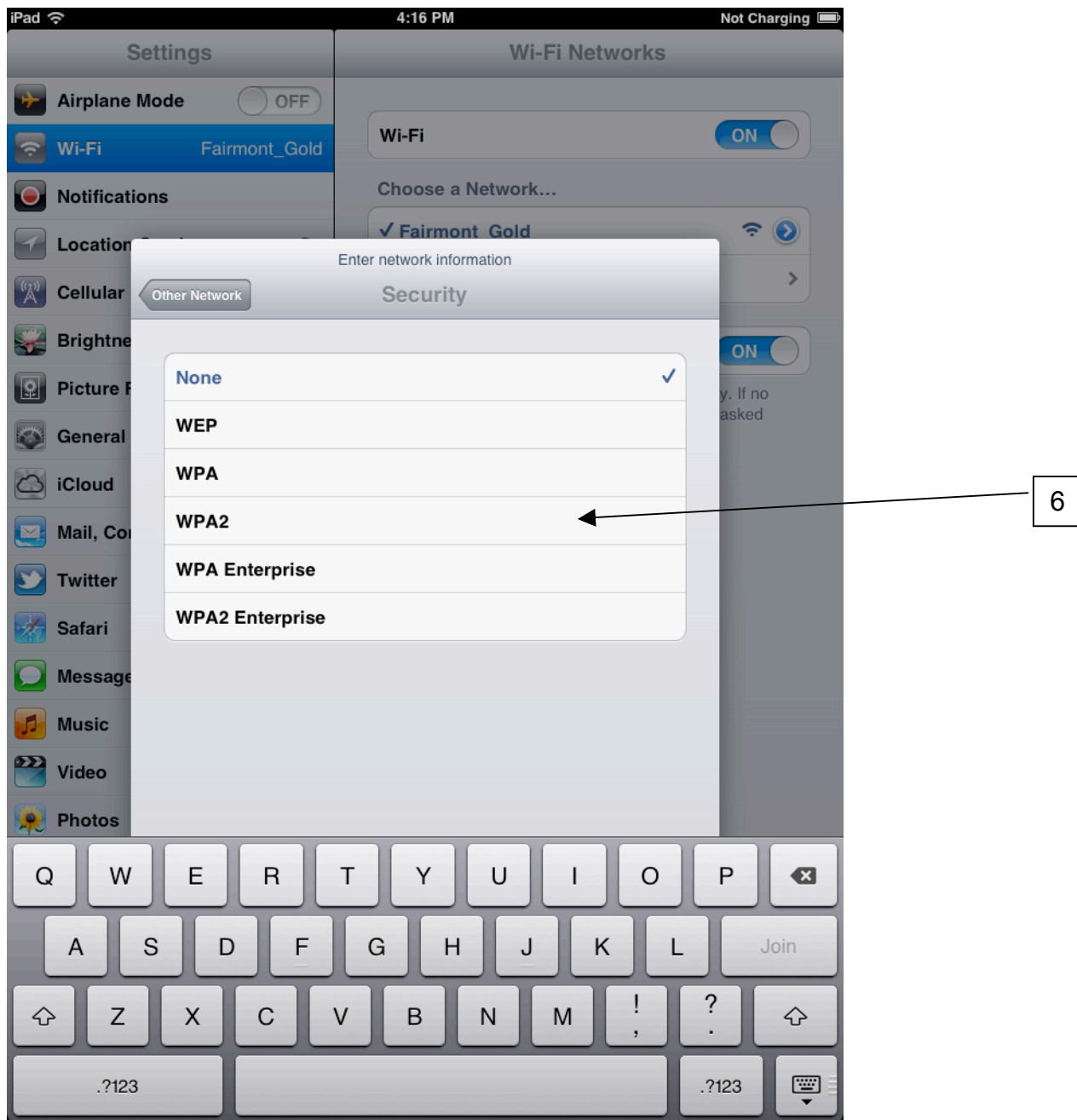
1. Tap on the settings icon.



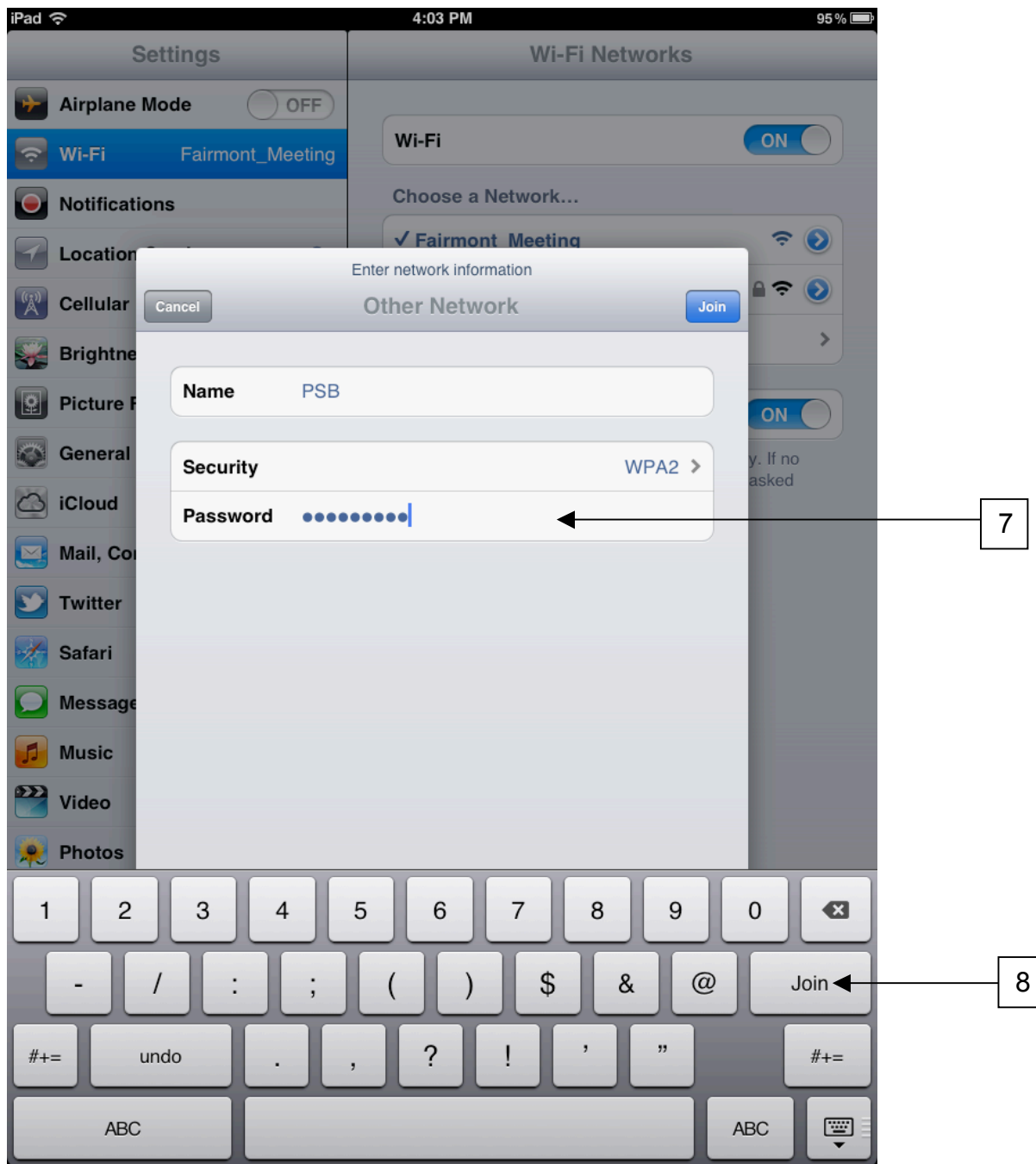
2. Tap on Wifi
3. Tap on Other... (there will not be a PSB network shown on your device yet.)



4. Type in "PSB" in the name field. Note that this must be all CAPS
5. Click on the arrow next to Security



6. Tap WPA2



7. Enter the password of orcpsb123. The password is all lowercase.
8. Click Join

You are now successfully connected.